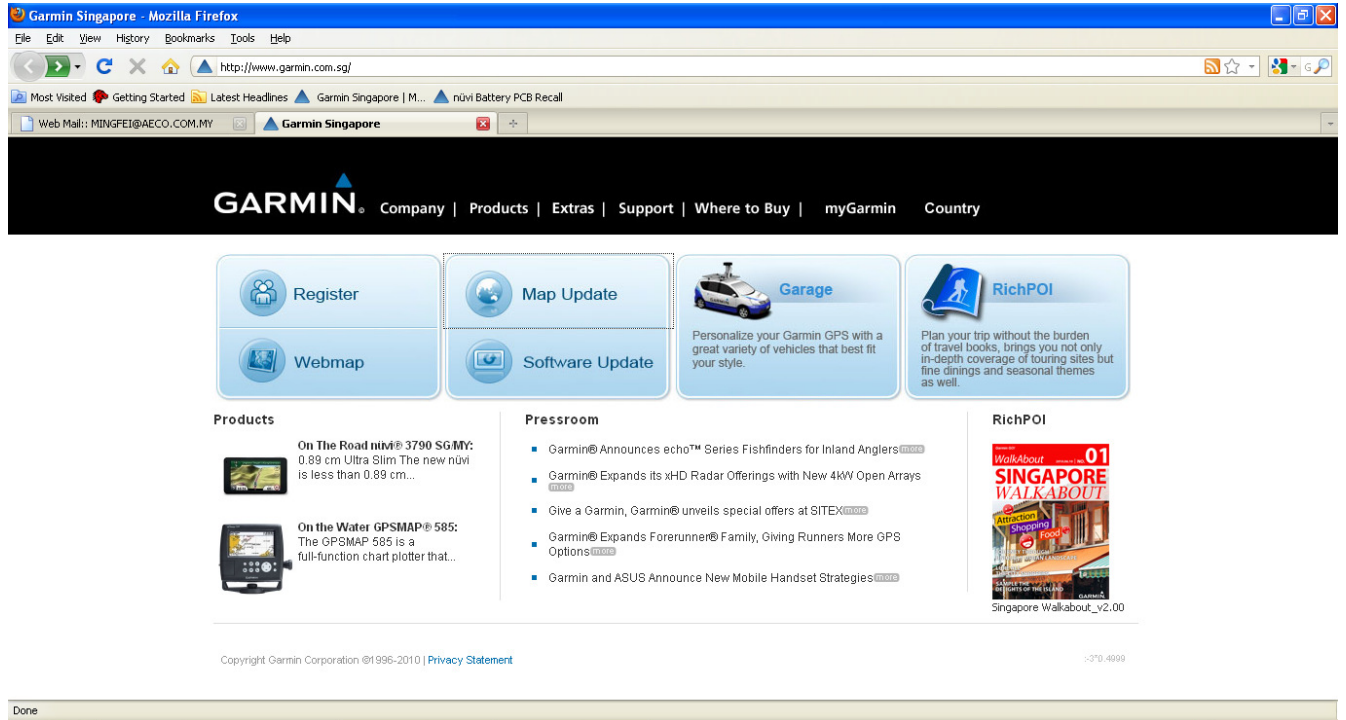
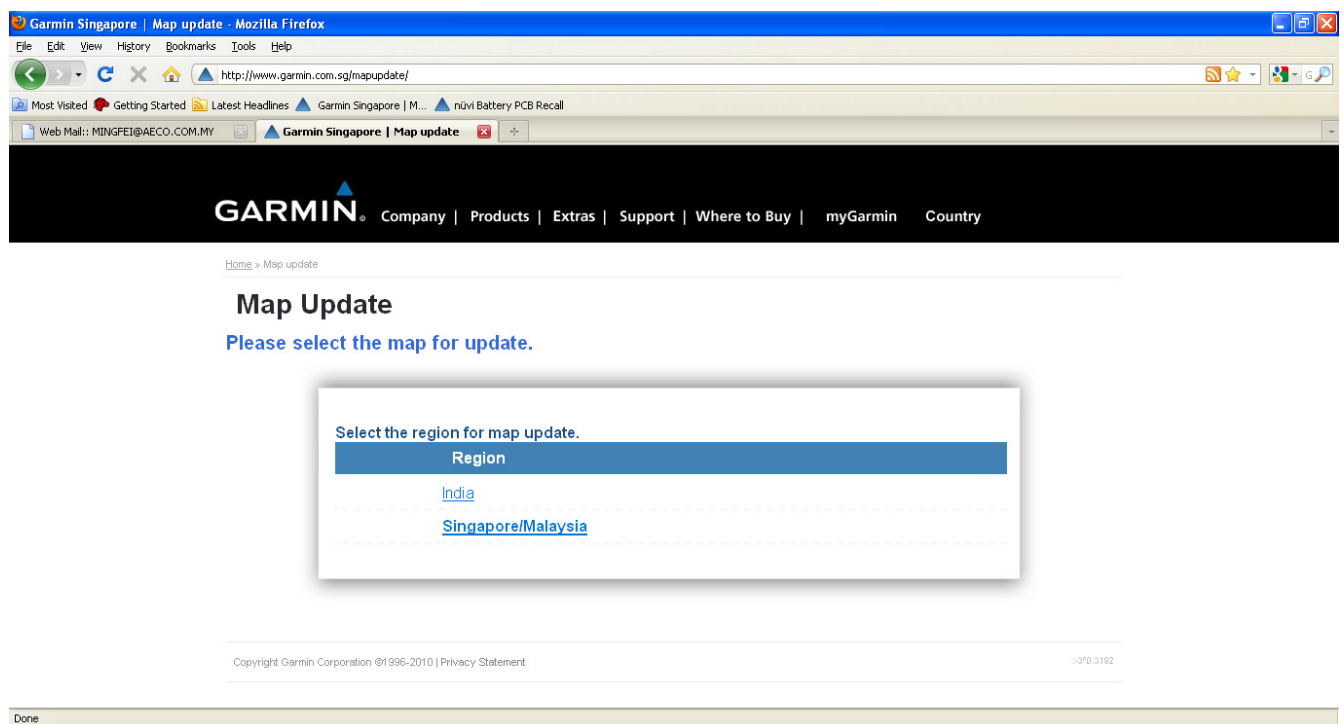


Malsing Map update for nuvi products

First go to <http://www.garmin.com.my> and click on Map Update.

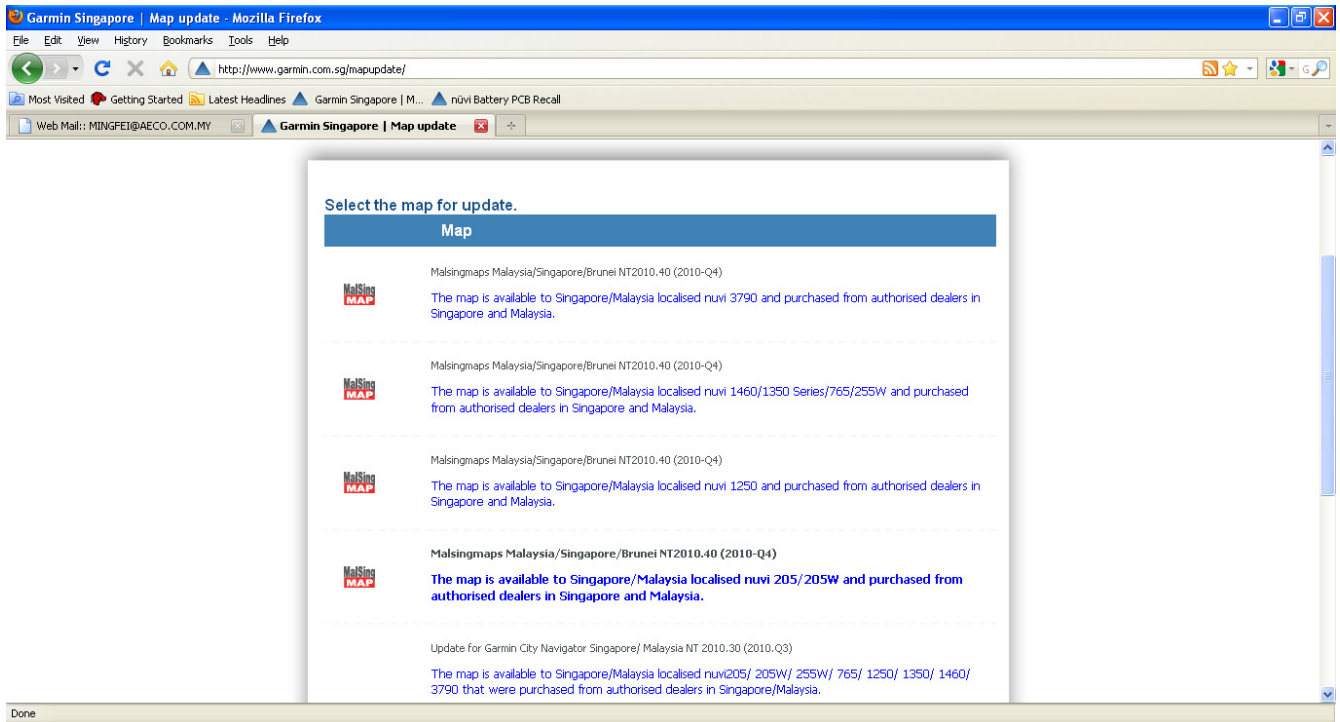


This should bring you to <http://www.garmin.com/garmin/cms/site/sg/support/MapUpdate/>



GARMINTM

Then click on Singapore/Malaysia. It will bring you to another page with a few links. Click on the one that corresponds to the model of the unit you are trying to update the map for.



It will then bring you to a page with following prompt.

Step1.Download the map installer.

Malsingmaps License Agreement

By downloading, installing, or using this map, you agree to be bound by the terms and conditions of the following license agreement. Please read this agreement carefully.

This is a legal agreement between you (as an individual or other legal entity) and Malsingmaps.com. By proceeding with the downloading and installation of this map ("Map"), you indicate your acceptance of this agreement. If you do not agree to the terms of this End User License Agreement, you do not have the authority to use the Map.

1. "Map" refers to all data, codes, data and all updates provided by Malsingmaps.com. "User" means the licensee under this

Map Installer

File Size 725.4 MB

Step2. Generate the unlock code.

Please enter the serial number of your GPS device. ?

Serial Number:



Click on I agree and start the download. Download the executable and run it following the prompts with your Garmin GPS plugged in. Do not close this page!! You will need to generate an unlock code, just key in the serial number of your set which you can find on the bottom of your GPS unit and copy and paste the unlock code into the executable when it asks for it.

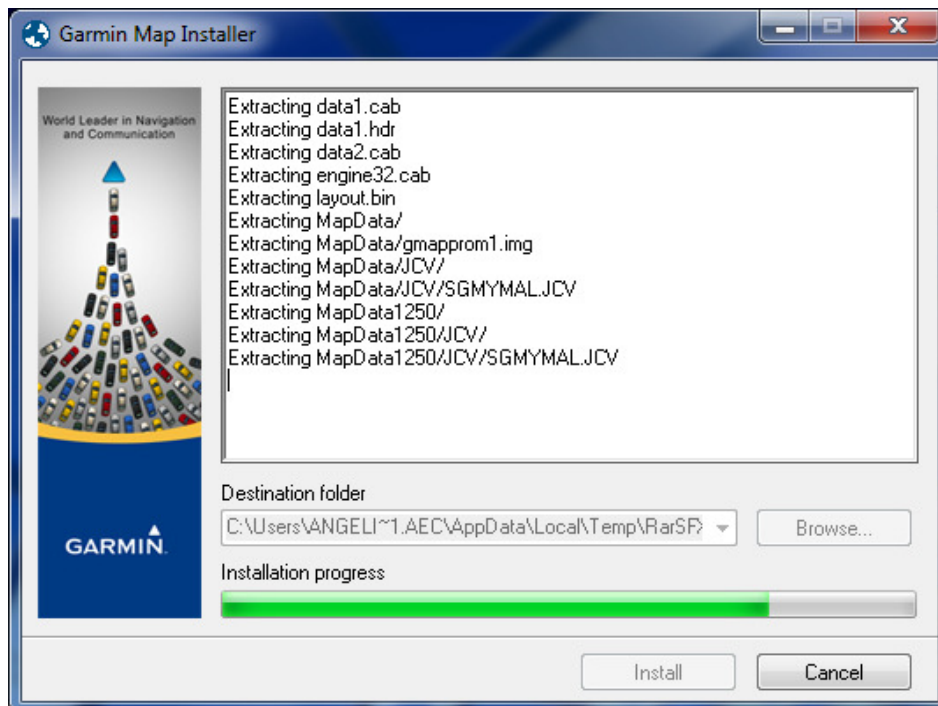
Step2. Generate the unlock code.

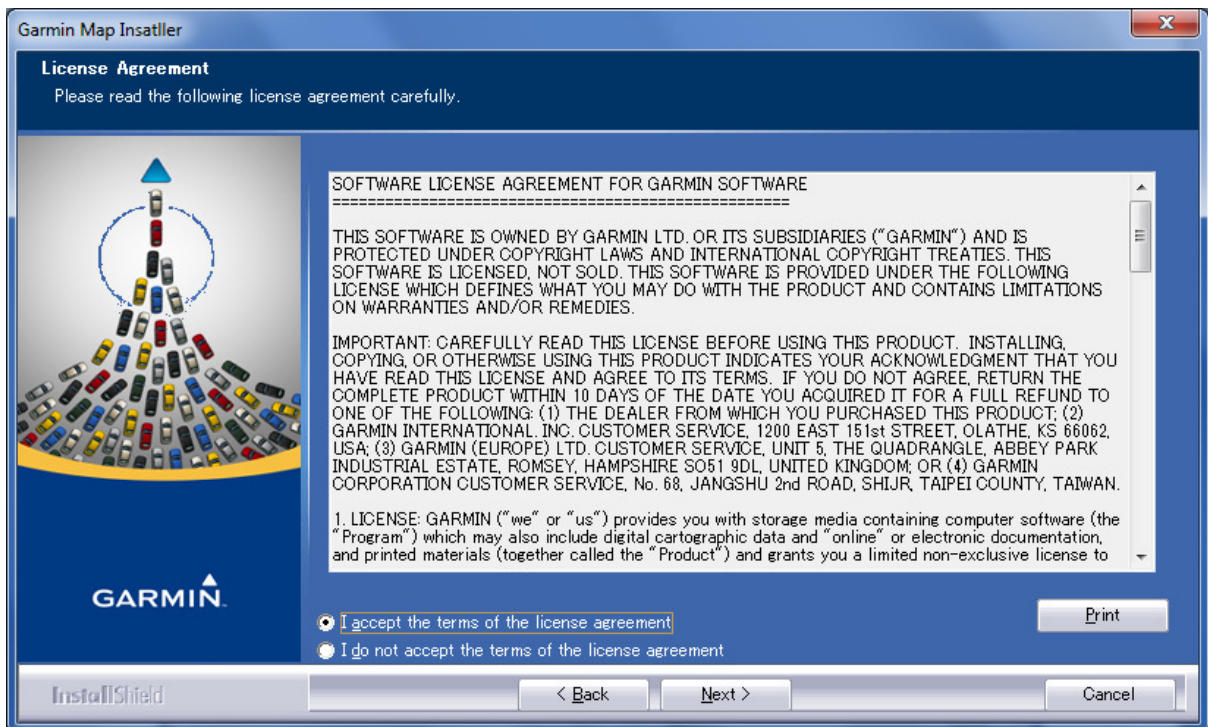
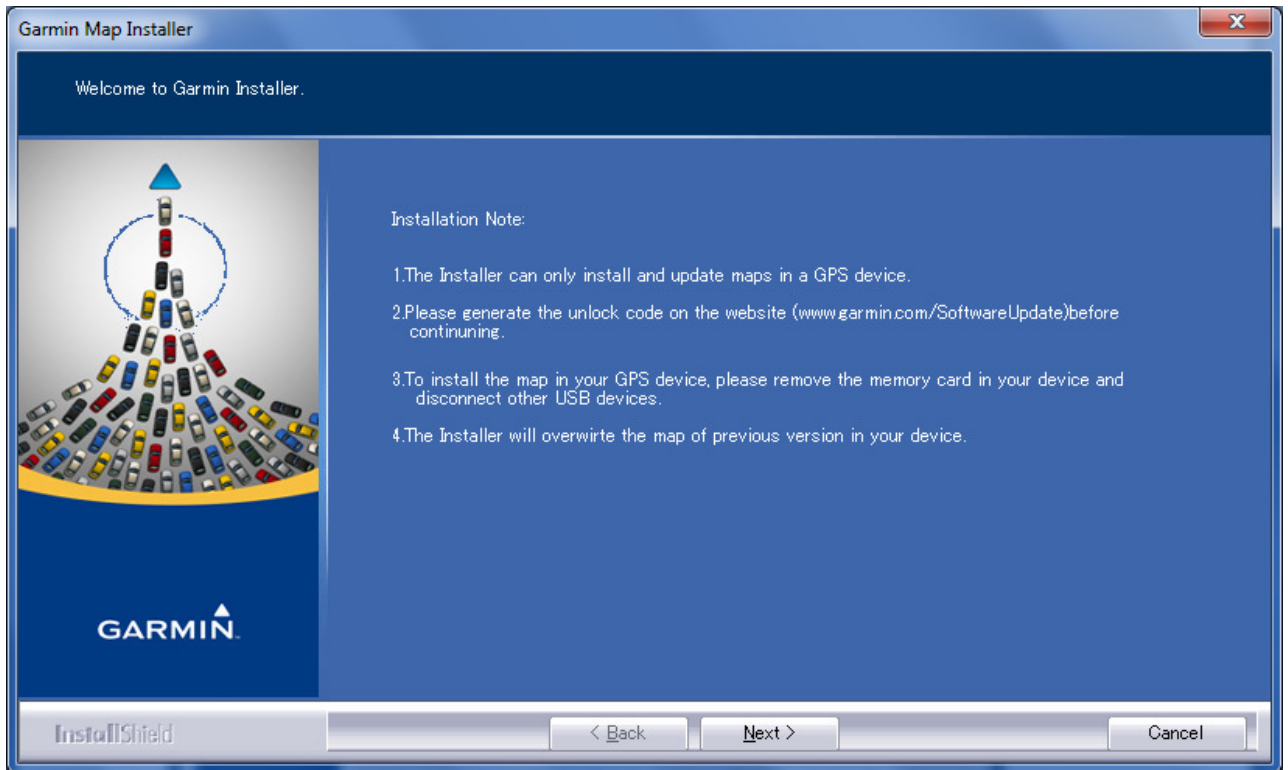
Please enter the serial number of your GPS device. ?

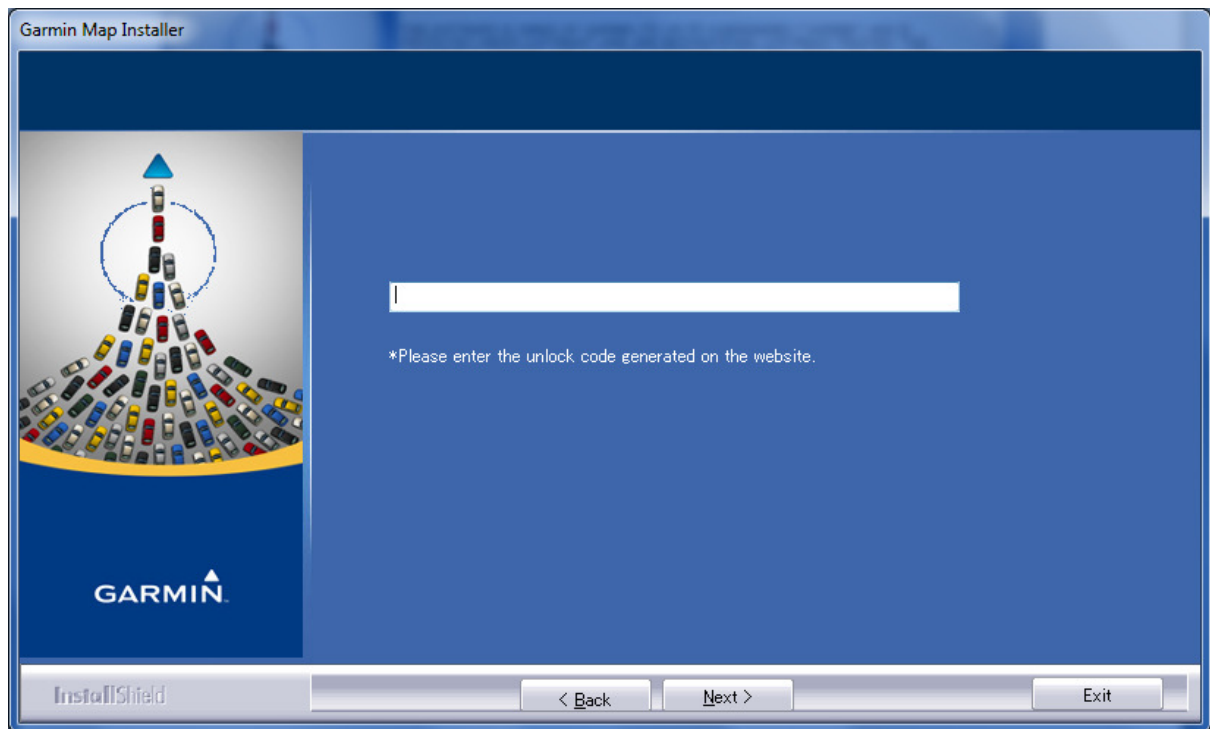
Serial Number:

It will come up with an unlock code. Keep this page open until the end of the installation.

Run the executable that you have just downloaded.







Then press next. It will ask you whether or not you want to install the map. Click yes and it will install it automatically.

If you have any questions, please do not hesitate to contact us at 603-9285 8062.

